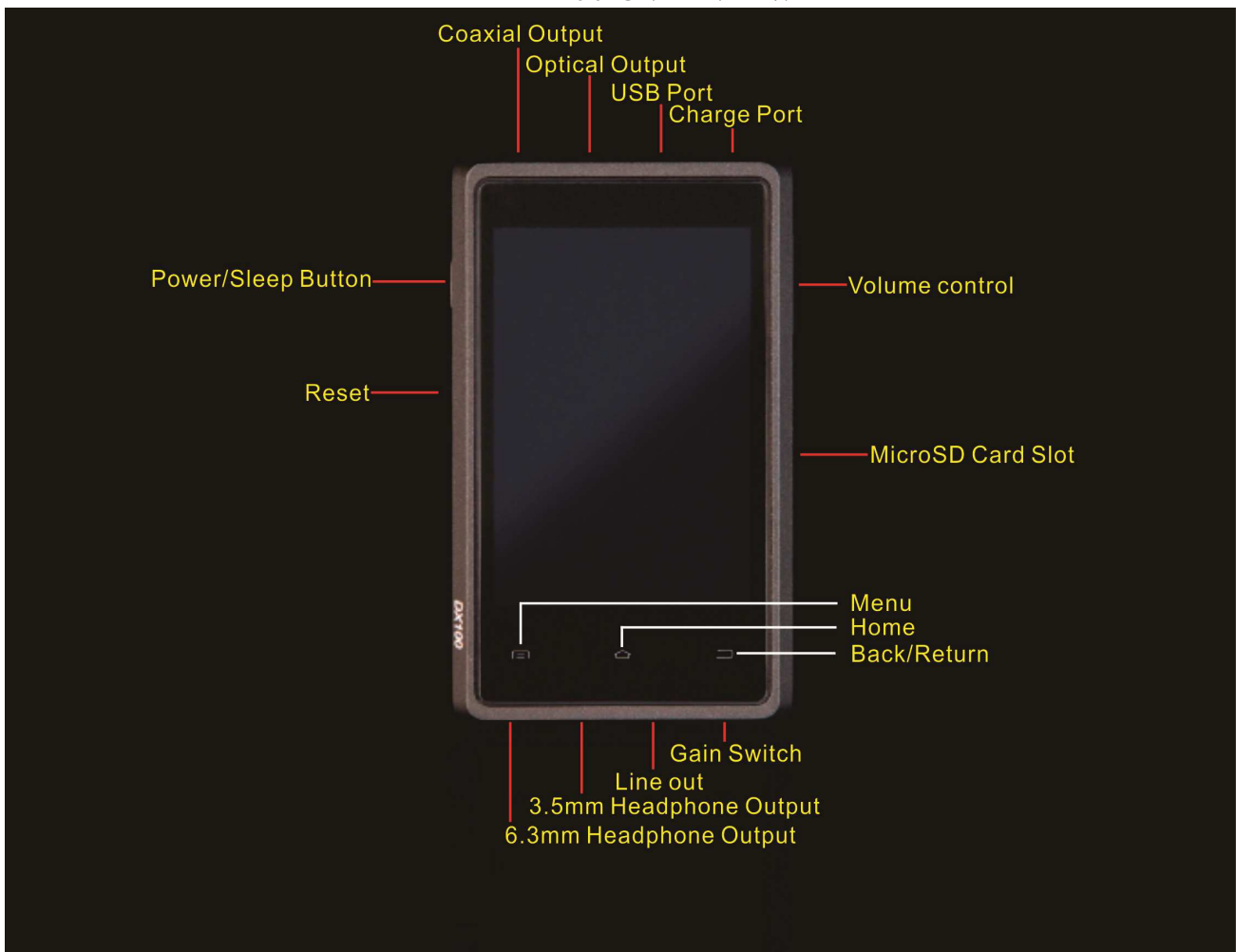


USER GUIDE

DX100 Digital Audio Player by iBasso

This manual is composed of two parts, the first of which will specifically address the features and operation of the iBasso Music Player while the second part will provide a brief overview of the Android operating system used in the DX100. This is specifically provided for those who are not familiar with the use of this operating system.

DX100 OVERVIEW

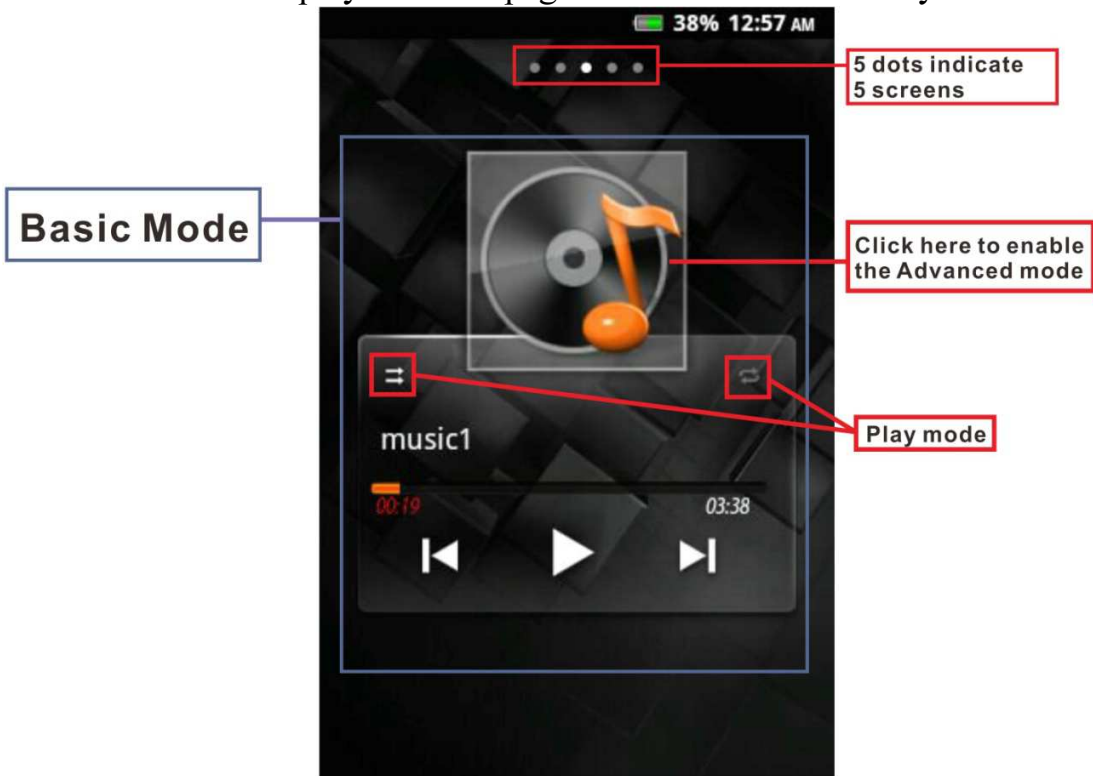


The DX100 is operated by hardware controls for Power/Sleep, located on the top left side of the player, a digital volume control located on the top right side of the player and a 3-position gain switch located on the bottom. In addition to these hardware controls, there are also 3 touch-based icons located at the bottom of the screen. From left to right, these are Menu, Home and Back (Return).

There are also various labeled jacks; on the top side are Charge, MicroUSB, Optical output and Coaxial output. On the bottom of the player are found 1/4" and 1/8" phone jacks, analog Line-out (volume-controllable) and a 3-position gain switch. Immediately below the volume control is a slot for use with an external microSD card.

DX100 BASIC OPERATION

To begin operation, press and hold the Power/Sleep button for approximately 3 seconds, at which time the DX100 will begin the boot process and will show screen activity consisting of the DX100 and iBasso logos. When the boot process is complete, the DX100 will then display the homepage basic iBasso Music Player.



At the top of the homepage are 5 dots, the center one being highlighted. These dots indicated the 5 screens that are present on the Android operating system. To move from one screen to another, simply swipe across the screen. By default, the basic music player is found on page 3 with a listing of various music categories found on page 4. The dot corresponding the page currently in view will always be highlighted.

Page one displays icons from user downloaded applications, page two contains a list of the applications included by iBasso as part of the Android OS. Page 5 is empty and can be configured by the user.

Regardless of which page or application is currently in view, touching the "Home" button at the bottom of the screen will instantly return one to the Music Player basic

view which is the DX100 default homepage. Pressing the Menu button on the bottom left will bring up a context menu depicting various Android functions which will be discussed later. Pressing the Return (Back) button on the bottom right of the screen will move back one page at a time until the home page is once again displayed.

To transfer music files to the DX100, connect it to your computer (PC, Mac or Linux) using the included microUSB cable. When this is done, the DX100 will display a “USB connected screen with a white box labeled “Turn on USB storage” Simply touch this box and the DX100 will appear on your computer screen as a drive labeled “IBASSO”



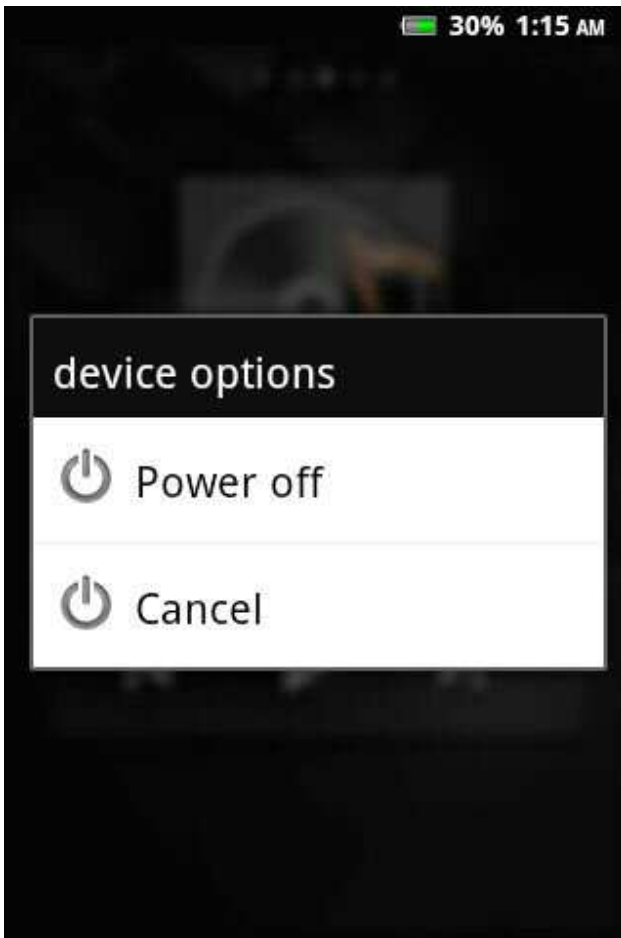
Opening this icon will display the root drive of the DX100. This drive contains a number of folders relating to system operation. (Note: These root drive folders cannot be renamed) One of the folders is labeled “sdcard” Do not place music files in this folder as the OS associates this folder with an external Micro SD card.

If an external card is in place, it will show up as a second drive on your computer screen.

Music files can easily be transferred to the internal memory via drag and drop or copy and paste. Either complete albums or individual music files can be transferred. No special software is required for transferring files.

When transfer is complete, make sure to safely remove the drive(s) from your computer screen before disconnecting the USB connection to the DX100. It will take a few moments for the DX100 to scan and catalog the new files prior to playing.

If one pauses the music player and briefly presses the Power/Sleep button, the DX100 will enter a sleep mode requiring very little power. Another press will bring the player back to life to the point it was prior to pausing. Play mode and repeat settings will also be remembered. A long press of the Power/Sleep button will display the shut-down menu.

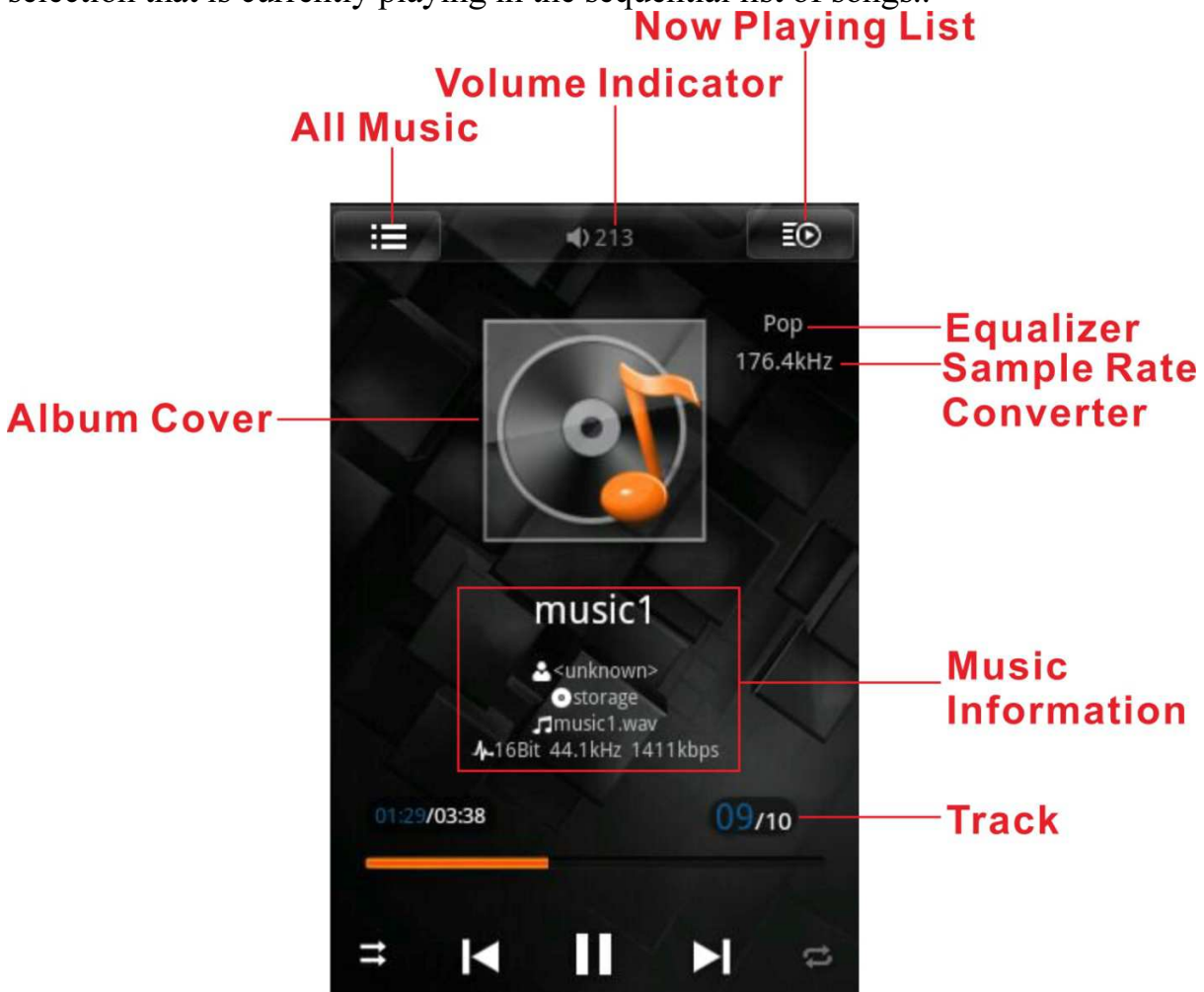


iBasso MUSIC PLAYER OPERATION

The Music Player, by default, appears in the basic mode. Using this mode, one can select from the music categories shown on page 4 and control playback, pause, forward/backward, play mode (sequential/shuffle) and several repeat modes by simply touching the desired icons.

Please note that pressing the Menu icon at the bottom of the screen will still display a context menu relating to Android functions, not Music Player options.

To enable the Advanced mode of the iBasso Player, touch anywhere in the square icon (album cover) that contains the image of a record and musical note. At this time you will see the display change and show much additional information about the music selection that is currently playing in the sequential list of songs..



At the top left of the screen is an icon that, when pressed, will show the selection being played from the list of all songs as well as list of category types. This category list can be scrolled right to left with a fingertip to view all selections. Touching the Back icon at the bottom of the page will return to the main player screen, remaining in the advanced mode. Another touch of the Back icon will return to the basic player main screen.

While in the advanced player mode, touching the Menu icon at the bottom of the screen will show a context menu for the iBasso Music Player. The sub-menus include controls for Play Modes, Digital Filter (DF), Sample Rate Control (SRC), EQ and several other self-explanatory selections.



The SRC control when turned on forces the DX100 to either upsample the music files to the selected value. With the SRC disabled (Native play mode), the DX100 will play bit-perfect at whatever sample rate is present on the recorded file.

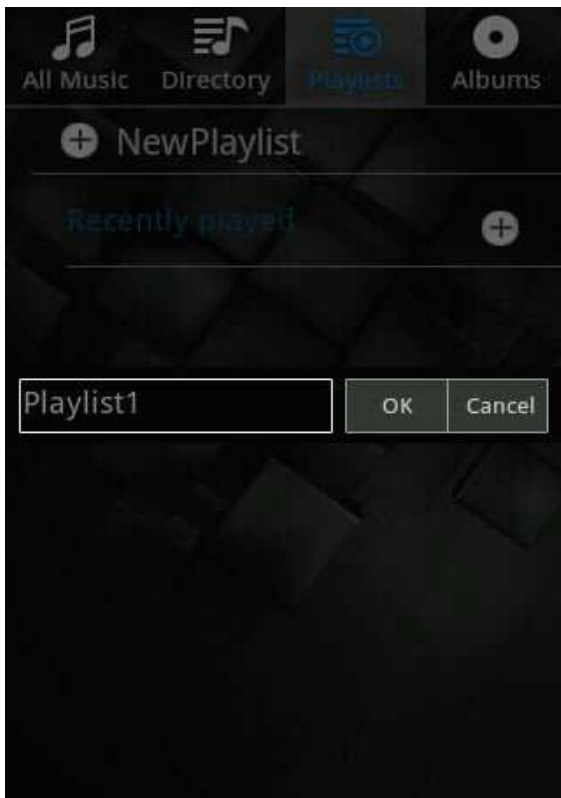
Once again, to return to a previous page one only needs to touch the “Back” icon.

It should be noted that the superb audio quality of the player remains the same in both basic and advanced modes.

MUSIC PLAYER FILE NAVIGATION

Managing Albums, Songs, Playlists, etc, is as simple as “Tap” or “Press”!

As an example, if one wishes to create a new playlist, simply tap the “All Music” icon at the top left of the advanced player homepage, then tap “Playlist”. A dropdown context menu will appear providing the option to create a new playlist. After creation of the new playlist, it can be renamed as desired.



To add items to a playlist, just press and hold the desired selection and a context menu will appear with options to add to playlist, add to favorites, to play or to delete.

Just remember that a tap is similar to a left-click on your computer and will select a file to initiate play, enter an Album list, Genre list, etc. whereas a long press will bring up an appropriate context menu. A long press is similar to right-clicking on a computer.

Our suggestion for gaining familiarity with the operation of the DX100 is to transfer several music files and experiment with the various functions and options available until feeling comfortable with the Music Player interface and capabilities.

CHARGING THE DX100

Using the included charger, plug it into the input labeled “Charge” at which time charging will begin automatically. A charging icon will then be shown on the screen. This icon will also indicate when charging is complete. Although charging is quite rapid, the DX100 can be safely used while charging is being accomplished if desired.



Full Charge



Empty Battery

BASIC ANDROID OPERATION

For those who are unfamiliar with the Android operating system, the following information will be helpful in fully utilizing the many advanced capabilities present in the DX100.

To begin, it is suggested that one creates a free Google account as this is required to access the Android Market where there are literally thousands of available applications, most of which are available at little or no cost.

Also, in order to access the internet with the DX100, it is necessary to activate the Wi-Fi network that is built into the DX100. To do this, one needs a wireless router as part of a home computer setup. If no home Wi-Fi is available, one can also utilize the many public Wi-Fi networks available at coffee houses, libraries, restaurants, etc.

Assuming that one has home Wi-Fi available, from the DX100 homepage, touch the Menu icon at the bottom of the screen. This will bring up a context menu that will show, among other items, a choice called “Settings”. When the Settings icon is touched, a menu of Android management options will appear, with the first choice being entitled “Wireless & networks”.



Touch the Wireless setting icon and you will see listed options to turn on Wi-Fi, manage settings, and several other wireless-related menu settings. When Wireless is enabled by touching the box to the right, the DX100 will automatically search for any Wi-Fi networks that are in range. To connect to a public network that is unlocked, simply touch “Connect”. When connected, a Wi-Fi symbol will be visible at the top of the screen next to the battery icon. The number of bars visible on the icon relates to the strength of the Wi-Fi signal.

If you are attempting to connect to a private network such as your home system, you will need to go to the next menu setting called “Wi-Fi settings” and enter the appropriate password for your particular wireless router.

Once your Wi-Fi settings have been properly configured, the DX100 will remember your settings so one only needs to turn the Wi-Fi back on when desired. As Wi-Fi operation does require additional battery power, it is suggested that it be left off unless needed.

With the DX100 Wi-Fi enabled, one can use the Browser icon to access the internet. If desired, one can also set up email accounts; add icons for saved favorites, and many other computer-related functions.

To access the Android Market, one needs to enable “Wi-Fi” as well as “Background data” which is found under Settings/Accounts & Sync”. As with Wi-Fi use, this setting also requires additional battery power and is best left unchecked when not in use.

With both settings enabled and a Google account established, one can access the full Android Market from the Icon located on the second home screen.

The Market can be explored via searches, browsing or by looking through posted application reviews. When one finds a desired app, it can be downloaded by touching the “Download” icon followed by the “Install” button. Installation is automatic and when complete, an icon will be shown by default on the first DX100 homepage.

It is also possible to customize your screens with additional icons, shortcuts, widgets, etc by pressing and holding a blank spot on a screen until a context menu appears, then scrolling to find the desired item. These can also be easily deleted by pressing and holding a user-installed icon until it is highlighted, at which time a small “trash can” icon will appear at the bottom of the screen. Dragging the selected icon to the trash can will delete the icon but not the program.

As the Android Market will remember all downloaded apps in “My Apps” an unwanted application can be deleted via either the Market or by uninstalling from the Settings menu.

While there are many more system management tools available from the Settings menu, they are beyond the scope of this manual. For those wishing further information on the use of the Android operating system, the following link may prove helpful:

<http://tinyurl.com/6qjhvqv>

We at iBasso sincerely hope that this manual serves to better familiarize you with the many unique capabilities of the DX100!

Enjoy!!!

Team iBasso